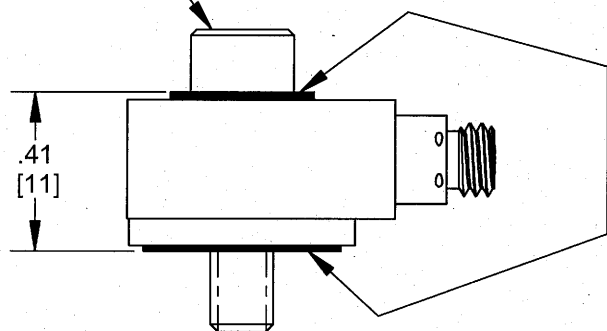
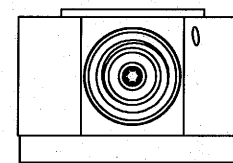


STANDARD #8 OR M4 BOLT



HARD ANODIZED ELECTRICALLY ISOLATED SURFACES



3211A1: 10mV/g

3211A2: 100mV/g

EXCEPT AS OTHERWISE NOTED
 ALL DIMENSIONS IN INCHES
 TOLERANCE: XXX = ± .005 XX = ± .01
 SURFACE FINISH EXCEPT AS NOTED 63/✓
 BREAK EDGES TO DEBURR .005 / .015 RADIUS OR CHAMFER
 FILLETS: .005 MAX R

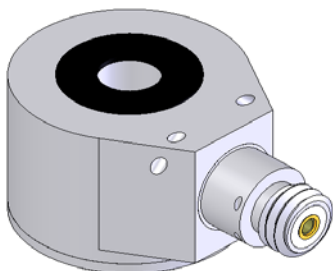
DYTRAN				CHATSORTH, CA			
INSTRUMENTS, INC.							
SCALE	2:1	REV	-	DATE	-	ECN	-
DATE	4/1/2005	PART NO.		MODEL 3211A			
DRAWN	PML	CHECKED		MATERIAL			
APPROVED	PML 12.905		NEXT ASSEMBLY		USED ON		
TITLE				DWG NO.			
OUTLINE / INSTALLATION DRAWING				127-3211A			
MODEL 3211A ACCELEROMETER				SHEET 1 OF 1			

PERFORMANCE SPECIFICATION

ENGLISH VERSION

DYTRAN **3211A2**

Rev A ECN 4953 12/1/2007
Rev B ECN 6981 09/02/2010



ACCELEROMETER, SINGLE AXIS IEPE

		units	minimum	typical	maximum
PHYSICAL					
Weight		grams		9.6	
Size	Diameter	inch		0.6	
	Height	inch		0.42	
	Thru hole		accommodates standard 8-32 or M4 bolt		
Mounting Connector	Type		coaxial		
	Thread		10-32		
	Location		side		
Housing	Material		titanium alloy		
	Isolation		case connected to signal ground and isolated from mounting surface by integral isolation washers		
Sensing Element	Material		ceramic		
	Mode		shear		

PERFORMANCE					
Sensitivity at 4mA		mV/g	95	100	105
Measurement Range		±gpk		50	
Frequency Range, ±5%		Hz	1		10000
Resonance Frequency		kHz		>31	
Equivalent Noise	1Hz to 10kHz	g rms		0.0001	
Sensitivity vs Current	2mA to 10mA	%			1
Transverse Sensitivity		%			5
Polarity	see outline drawing			positive	

ENVIRONMENTAL					
Shock		g pk			5000
Operating Temperature		°F	-67		250
Seal				hermetic	
Coefficient of Thermal Sensitivity		%/°F		0.06	
Magnetic Sensitivity at 100 Gauss		g/Gauss		0.004	
Thermal Shock Sensitivity		g/°F		0.02	
Base Strain Sensitivity		g/με		0.04	
Stray Voltage Sensitivity	10V applied to mounting surface	equiv. g			0.004

ELECTRICAL					
Supply Current		mA	2		20
Compliance Voltage		Vdc	18		30
Output Bias	Room Temp	Vdc	11		13.5
	Operating Temp	Vdc	8		16
Output Impedance		Ω		120	
Discharge Time Constant		sec		0.5	
Warmup Time		sec		2	

ACCESSORIES SUPPLIED

- (1) 6595, 8-32 mounting screw
- (1) 6597, M4 x .7 mounting screw