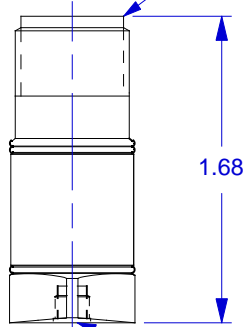


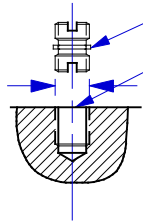
10SL-4P, 2-PIN CONNECTOR   
MIL-C-5015




THREAD 10-32  
UNF-2B, REF

MODEL 6200 MOUNTING STUD,  
PROVIDED

10-32 THREAD, TYP (REF)




SELECT OR PREPARE SURFACE, FLAT TO .001 TIR  
MOUNTING HOLE PREPARATION:  
DRILL #21 (.159) DIA. X .250 DEEP  
BOTTOM TAP 10-32 UNF-2B X .200 MIN. DEPTH PERF. THD.



		CHATSWORTH, CA.						
		SCALE	1X	REV	-	DATE	-	ECN
DATE		5-2-02		PART NO.		MODEL 3176B		
DRAWN		N.C.		CHECKED		R.A.		
APPROVED				NEXT ASSEMBLY		USED ON		
TITLE						DWG NO.		
<b>OUTLINE/INSTALLATION DRAWING, MODEL 3176B</b>						<b>127-3176B</b>		
						SHEET 1 OF 1		

**EXCEPT AS OTHERWISE NOTED**

ALL DIMENSIONS IN INCHES  
TOLERANCE: .XXX = ± .XX = ±

SURFACE FINISH EXCEPT AS NOTED 

BREAK EDGES TO DEBURR RADIUS OR CHAMFER

 THESE DIAS  TO T.I.R.

FILLETS - MAX RAD.

 PINOUT: A- SIGNAL  
B- GROUND RETURN



## SPECIFICATIONS

### MODELS 3176B & 3176B1 LIVM ACCELEROMETERS

SPECIFICATION (Common to both models)	VALUE	UNITS
<b>PHYSICAL</b>		
WEIGHT	44	GRAMS
SIZE, HEX x HEIGHT	.69 x 1.66	IN
MOUNTING PROVISION (Model 3176B)	TAPPED HOLE AT CENTER	10-32
(Model 3176B1)	TAPPED HOLE AT CENTER	1/4-28
ELECTRICAL CONNECTOR, AXIAL	2-PIN MILITARY Mil-C-5015, HERMETIC	
MATERIAL CASE/CONNECTOR	300 SERIES	ST. STEEL
ELEMENT TYPE	PIEZOCERAMIC, PLANAR SHEAR	
<b>PERFORMANCE</b>		
SENSITIVITY, $\pm 5\%$ [1]	100	mV/G
RANGE FOR $\pm 5$ VOLTS OUT	$\pm 50$	G
FREQUENCY RESPONSE, $\pm 10\%$	0.3 to 10,000	Hz
MOUNTED RESONANT FREQUENCY	$>27$	kHz
EQUIVALENT ELECTRICAL NOISE FLOOR, (RESOLUTION)	.00002	G RMS
AMPLITUDE NON-LINEARITY (ZERO BASED BEST FIT ST.LINE METHOD)	2.0	% F.S., MAX.
TRANSVERSE SENSITIVITY, MAX.	5	PERCENT
STRAIN SENSITIVITY	.0001	G's PER MICROSTRAIN @ 250/ $\mu\sigma$
<b>ENVIRONMENTAL</b>		
MAXIMUM VIBRATION	500	G's, RMS
MAXIMUM SHOCK	5000	G's, PEAK
TEMPERATURE RANGE	-60 TO +250	°F
ENVIRONMENTAL SEAL	GLASS TO METAL/WELDED, HERMETIC	
<b>ELECTRICAL</b>		
COMPLIANCE (SUPPLY) VOLTAGE RANGE [2]	+20 to +30	VDC
EXCITATION CURRENT RANGE	2 to 20	mA
OUTPUT IMPEDANCE, NOM.	200	OHMS
OUTPUT BIAS VOLTAGE, $\pm 1$ . VOLTS	12	VDC
DISCHARGE TIME CONSTANT	0.8 to 1.5	SEC.
OUTPUT SIGNAL POLARITY FOR ACCELERATION TOWARD TOP	POSITIVE GOING	
POWER/SIGNAL GROUND to CASE ISOLATION, MIN.	10	GIGAOHMS
<b>ACCESSORIES PROVIDED</b>		
MODEL 3176B	[1] MODEL 6200S MOUNTING STUD	
MODEL 3176B1	[1] MODEL 6176 MOUNTING STUD	
<b>NOTES</b>		
[1] MEASURED AT 100 Hz, 1 G RMS. A CALIBRATION CERTIFICATE TRACEABLE TO <b>NIST</b> IS SUPPLIED WITH EACH INSTRUMENT.		
[2] THE USE OF DYTRAN LIVM CURRENT SOURCE POWER UNITS IS RECOMMENDED. <b>DO NOT CONNECT THIS INSTRUMENT TO A SOURCE OF DC VOLTAGE WITHOUT CURRENT LIMITING PROTECTION, 20 mA MAX.</b> TO DO SO WILL DESTROY THE INTERNAL AMPLIFIER AND VOID THE WARRANTY.		