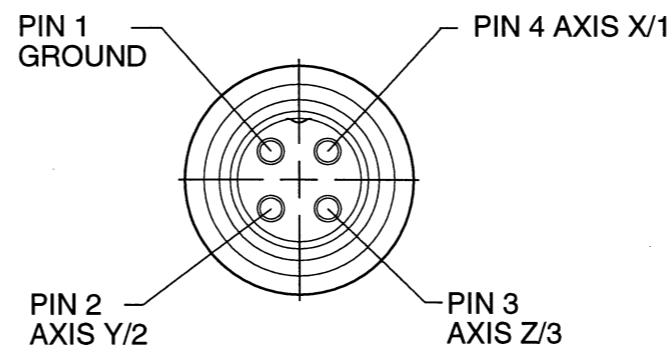
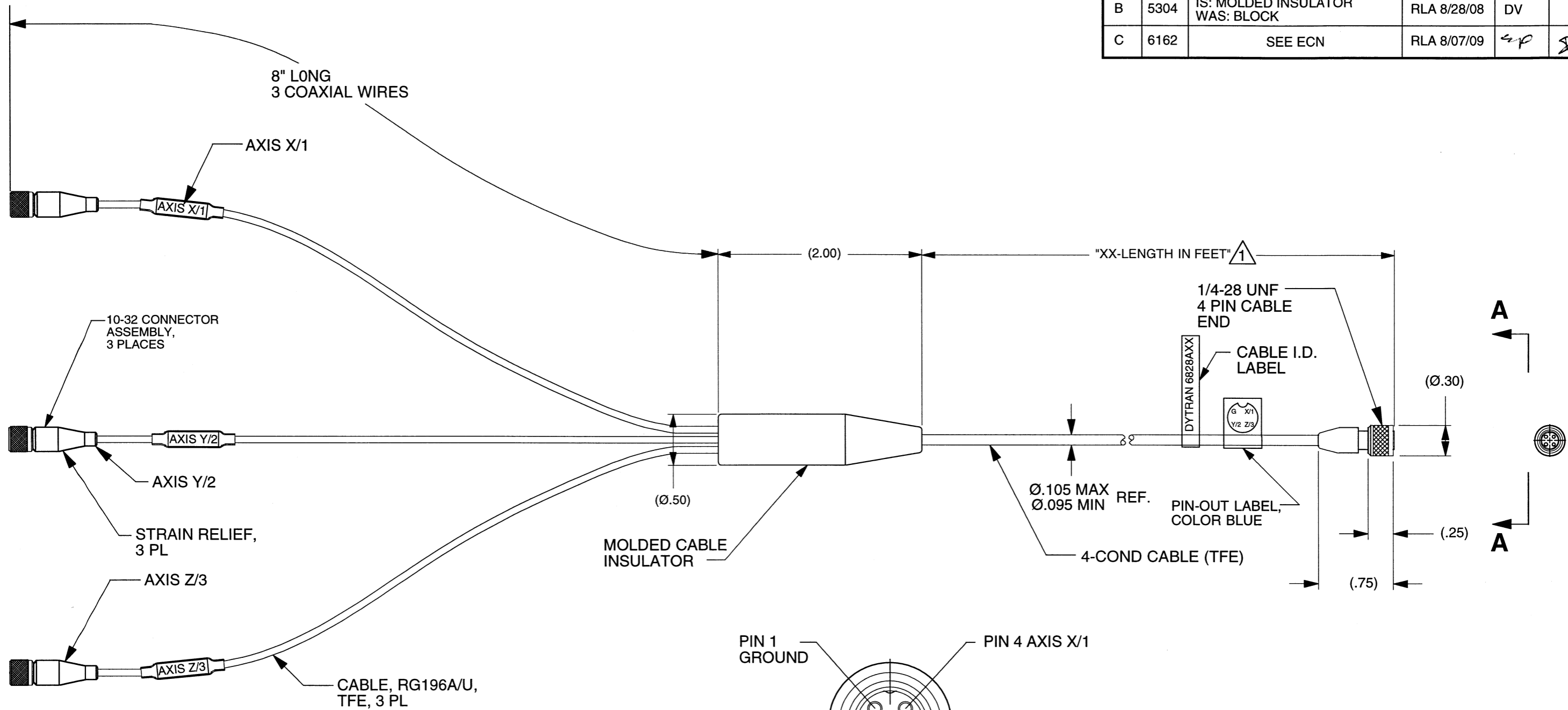


REV	ECN	DESCRIPTION	BY/DATE	CHK	APPR
B	5304	IS: MOLDED INSULATOR WAS: BLOCK	RLA 8/28/08	DV	ANS
C	6162	SEE ECN	RLA 8/07/09	sp	sp



VIEW A-A
SCALE 4/1

2. OPERATING RANGE: -67°F (-55°C) TO 230°F(110°C)

¹ XX=WILL VARY IN FEET PER CUSTOMER REQUIREMENTS, FOR EXAMPLE: 6828A10 = 10 FT CABLE LENGTH

DYTRAN INSTRUMENTS, INC.		MASTER ONLY IF IN RED		CHATSWORTH, CA.	
SCALE 2/1	REV -	DATE SEE REV BLK	ECN -		
DATE 4/6/04	PART NO. MODEL 6828AXX				
DRAWN R.A.	CHECKED N.C.	MAT'L			
APPROVED CES	NEXT ASSEMBLY		USED ON		
TITLE OUTLINE/INSTALLATION DRAWING, CABLE ASSEMBLY, MINI 4 PIN. PLUG TO (3) 10-32				DWG NO. 127-6828A	
				SHEET 1 OF 1	