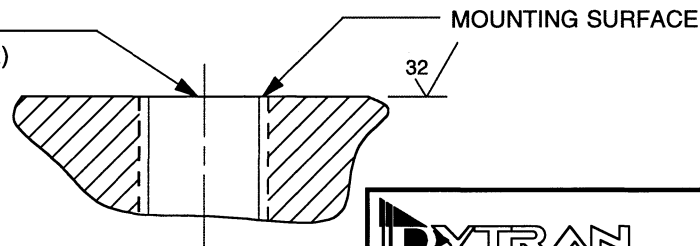


MOUNTING PREPARATION

PREPARE FLAT SURFACE (TO .001 TIR)
NEXT DRILL 39/64 (Ø.609) THRU
TAP 9/16-12 UNC-2B X THRU



1. MATERIAL, HOUSING & CONNECTOR HOUSING:
300 SERIES STAINLESS STEEL. TOP AND
BOTTOM SURFACES, 17-4 PH ST. STEEL
2. WEIGHT - 460 GRAMS
3. TORQUE TO 25 LB-FT AT INSTALLATION USING
WRENCH ON WRENCH FLATS ONLY.
4. DO NOT APPLY IMPACT LOADS TO FORCE
SENSOR WITHOUT IMPACT CAP, MODEL 6217
OR EQUIVALENT. CONSULT FACTORY FOR
SPECIAL IMPACT CAPS FOR YOUR
PARTICULAR APPLICATION.

EXCEPT AS OTHERWISE NOTED	
ALL DIMENSIONS IN INCHES TOLERANCE: .XXX = ±	.XX = ±
SURFACE FINISH EXCEPT AS NOTED	✓
BREAK EDGES TO DEBURR RADIUS OR CHAMFER	
△ THESE DIAS TO	T.I.R.
FILLETS -	MAX RAD.

DYTRAN
INSTRUMENTS, INC.

CHATSWORTH, CA.

SCALE	1X	REV	DATE	ECN
DATE	1/25/02	PART NO.	MODEL 1060C	
DRAWN	N.C.	CHECKED	R.A.	
APPROVED	1-250		NEXT ASSEMBLY	USED ON
TITLE				DWG NO.
OUTLINE/INSTALLATION DRAWING FORCE SENSOR, MODEL 1060C				127-1060C
				SHEET 1 OF 1

SPECIFICATIONS MODEL 1060C DYNAMIC FORCE SENSOR

SPECIFICATION	VALUE	UNITS
SENSITIVITY	-9	pC/Lb F
WORKING COMPRESSION RANGE	25,000	Lb F
MAXIMUM COMPRESSION FORCE	60,000	Lb F
WORKING TENSION RANGE	500	LB F
MAXIMUM TENSION FORCE [1]	1,000	Lb F
STIFFNESS	50.0	Lb/μ In
MOUNTED RESONANT FREQUENCY, UNLOADED	75	kHz
LINEARITY [2]	+/- 1	%F.S.
MAX SHOCK, UNLOADED	5,000	G's
MAX. VIBRATION, UNLOADED	+/- 3000	G's
COEFFICIENT OF THERMAL SENSITIVITY	.01	%/°F
TEMPERATURE RANGE	-100 to +500	°F
ENVIRONMENTAL SEAL	WELDED/EPOXY	
CAPACITANCE, NOM.	250	pF
INSULATION RESISTANCE	1 X 10 ¹²	Ohms
CASE MATERIAL	STAINLESS STEEL	
WEIGHT	460	GRAMS
MOUNTING PROVISION, BOTTOM	11/16-12 THREADED STEM	
MOUNTING PROVISION, TOP	3/8-16 X .300 DEEP TAPPED HOLE	
ELECTRICAL CONNECTOR, AXIAL (AT END OF THREADED STEM)		10-32 COAXIAL

ACCESSORIES SUPPLIED: (1) MOD 6232 3/8-16 MOUNTING STUD

NOTES:

[1] **Absolute maximum tension. Do not exceed in any case!**

[2] Percent of full scale or of any lesser range, zero based best fit straight line method.