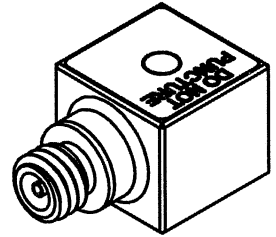
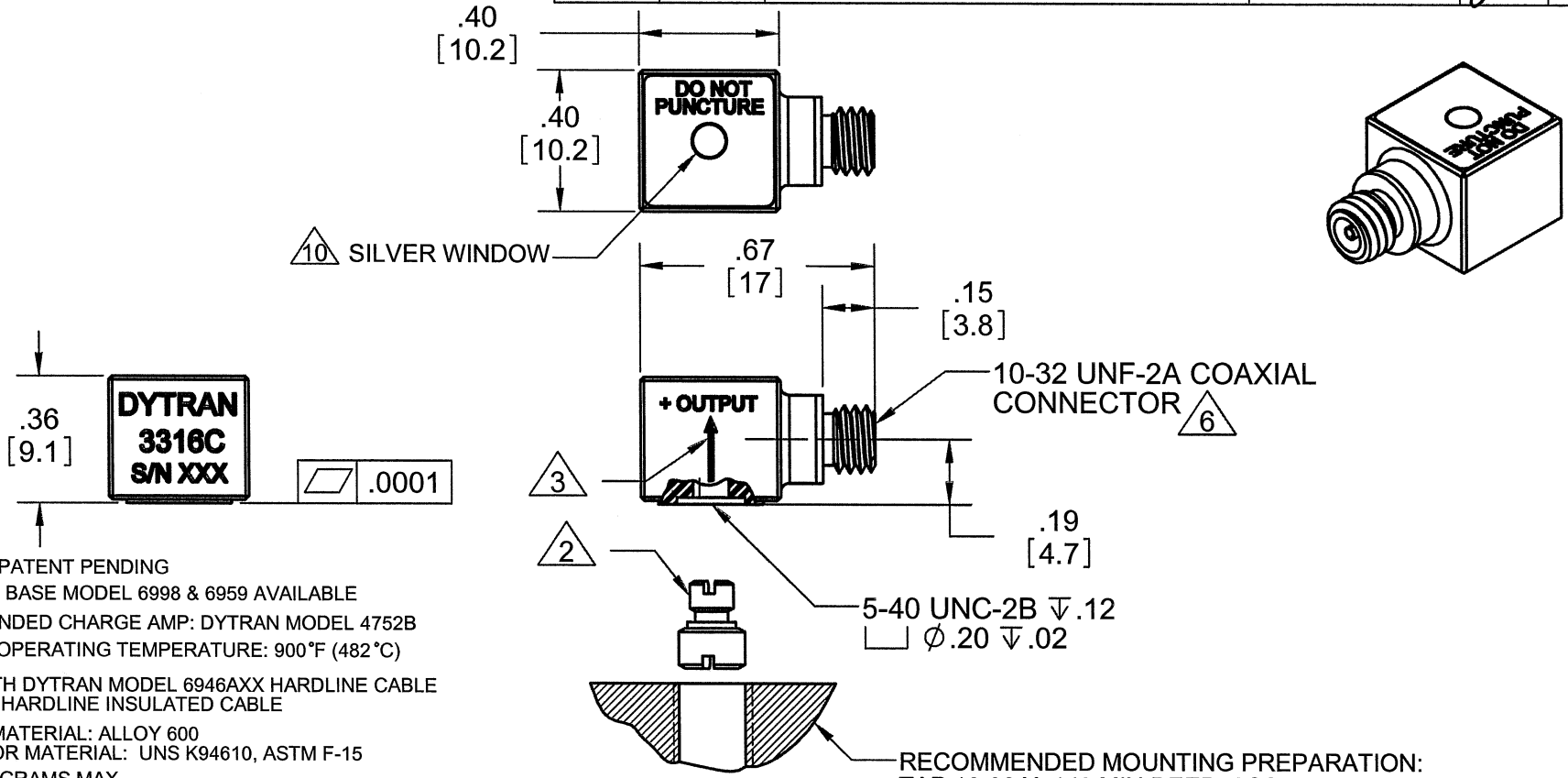


PROPRIETARY AND CONFIDENTIAL

THE INFORMATION CONTAINED IN THIS DRAWING IS THE SOLE PROPERTY OF DYTRAN INSTRUMENTS INC. ANY REPRODUCTION IN PART OR AS A WHOLE WITHOUT THE WRITTEN PERMISSION OF DYTRAN INSTRUMENTS INC. IS PROHIBITED

REVISIONS

REV	ECN	DESCRIPTION	BY/DATE	CHK	APPR
A	6701	INITIAL RELEASE	JS 11/22/11	<i>JS</i>	<i>AWS</i>



- △ 10 DESIGN IS PATENT PENDING
 - 9. ISOLATION BASE MODEL 6998 & 6959 AVAILABLE
 - 8. RECOMMENDED CHARGE AMP: DYTRAN MODEL 4752B
 - 7. MAXIMUM OPERATING TEMPERATURE: 900°F (482°C)
 - △ 6 MATES WITH DYTRAN MODEL 6946AXX HARDLINE CABLE & 6979AXX HARDLINE INSULATED CABLE
 - 5. HOUSING MATERIAL: ALLOY 600
CONNECTOR MATERIAL: UNS K94610, ASTM F-15
 - 4. WEIGHT: 5 GRAMS MAX
 - △ 3 ARROW DESIGNATES ACCELERATION DIRECTION FOR POSITIVE OUTPUT
 - △ 2 MOUNTING STUD 6584 (5-40 TO 10-32) SUPPLIED
 - 1. SENSITIVITY: 1 TO 2 pC/g
- NOTES: UNLESS OTHERWISE SPECIFIED

RECOMMENDED MOUNTING PREPARATION:
TAP 10-32 X .140 MIN DEEP. ASSURE THE SURFACE FLATNESS BETTER THAN .001 TIR.
MOUNTING TORQUE: 6-8 Lb-in

USED ON	NEXT ASSY	APPLICATION	THIRD ANGLE PROJECTION USA

UNLESS OTHERWISE SPECIFIED:
INTERPRET DIM & TOL PER ASME Y14.5M - 1994.
REMOVE BURRS.
COUNTERSINK INTERNAL THDS 90° TO MAJOR DIA.
CHAM EXT THDS 45° TO MINOR DIA.
THD LENGTHS AND DEPTHS ARE FOR MIN FULL THDS.
THDS PER MIL-S-7742.
DIMENSIONS APPLY AFTER FINISHING.

ALL MACHINED SURFACES. TOTAL RUNOUT WITHIN .005. BREAK SHARP EDGES .005 TO .010. MACHINED FILLET RADII .005 TO .015. WELDING SYMBOLS PER AWS A2.4. ABBREVIATIONS PER MIL-STD-12.

UNLESS OTHERWISE SPECIFIED: DIMENSIONS ARE IN INCHES. DIMENSIONS IN BRACKETS [] ARE IN MILLIMETERS. TOLERANCES ARE:

INCHES	METRIC	ANGLES
.XX ± .03	.X ± 0.8	± 1°
.XXX ± .010	.XX ± 0.25	

MATERIAL

FINISH

DO NOT SCALE DRAWING

CONTRACT NO.

APPROVALS		DATE
ORIG	DV	09/10/08
CHK	<i>DV</i>	12/6/11
APP	<i>AWS</i>	12/6/11
APP		

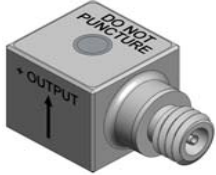
DYTRAN INSTRUMENTS, INC. **MASTER ONLY IF IN RED**

TITLE: **OUTLINE/INSTALLATION DRAWING, 3316C SERIES**

SIZE	CAGE CODE	DWG. NO.	REV
A	2W033	127-3316C	A

SCALE: NONE SOLIDWORKS SHEET 1 OF 1

Model Number 3316C	PERFORMANCE SPECIFICATION		DOC NO PS3316C
	SINGLE AXIS CHARGE MODE ACCELEROMETER		REV A, ECN 6701 ,11/22/11



- MINIATURE SIZE
- HERMETICALLY SEALED
- HIGH TEMPERATURE OPERATION

PHYSICAL

Weight, Max
Size
Connector [3]
Mounting Provision : Tapped Hole
Material
Element Style

Square x Height
Type

Housing
Connector
Material
Type

ENGLISH		SI	
0.18	oz	5.0	grams
.40 x .36	Inches	10.16 x 9.10	mm
10-32 Coaxial		10-32 Coaxial	
5-40 UNC-2B		5-40 UNC-2B	
Alloy 600		Alloy 600	
UNS K94610		UNS K94610	
Single Crystal		Single Crystal	
Planar Shear		Planar Shear	

PERFORMANCE

Sensitivity [1]
Range F.S for ± 5 Volts Output
Frequency Range, ±10%
Resonant Frequency
Capacitance
Linearity [2]
Phase Response (±5°)
Maximum Transverse sensitivity
Strain Sensitivity
Insulation resistance
at 75°F
at 900°F

1 to 2	pC/g	0.10 to 0.20	pC/m/s ²
±5000	G's	±49050	m/s ²
[4] to 10000	Hz	[4] to 10000	Hz
> 45	kHz	> 45	kHz
70	pF	70	pF
± 1%	% F.S.	± 1%	% F.S.
[4] to 3000	Hz	[4] to 3000	Hz
5	%	5	%
0.002	g/μe	0.02	m/s ² /μe
>1.0E8	Ω	>1.0E8	Ω
>2.5E5	Ω	>2.5E5	Ω

ENVIRONMENTAL

Maximum Vibration
Maximum Shock
Temperature Range
Seal

±6000	G, peak	±5886	m/s ² , peak
±10000	G, peak	±49050	m/s ² , peak
-60 to+900	°F	-51 to+482	°C
Hermetic		Hermetic	

This family also includes:

Model	Sensitivity (pC/g)	Range F.S (G's)	Output Polarity	Temperature (°F)
3316C1	1 to 2	± 5000	Negative when mounted on its base	-60 to+900

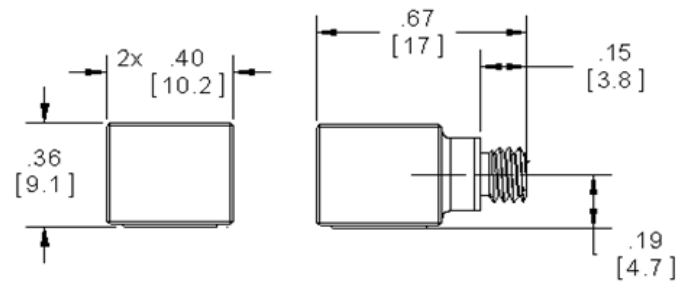
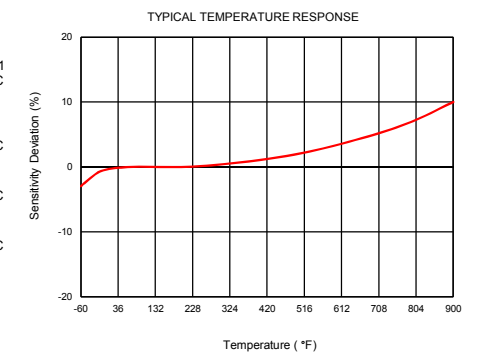
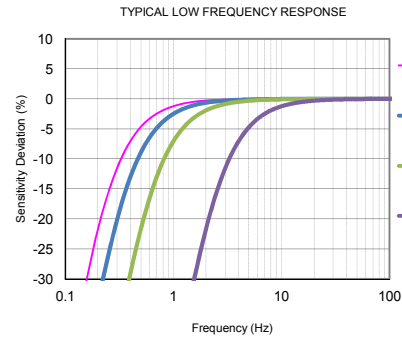
Refer to the performance specifications of the products in this family for detailed description.

Supplied Accessories:

- 1) Accredited calibration certificate (ISO 17025)
- 2) Model 6584 mounting stud (5-40 to 10-32), qty 1

Notes:

- [1] Measured at 100Hz, 1 Grms per ISA RP 37.2
- [2] Measured using zero-based straight line method, % of F.S. or any lesser range.
- [3] Mates with Dytran cable 6946AXX hardline cable and 6979AXX hardline insulated cable.
- [4] Low frequency response and phase response is function of charge amplifier. See graph below for example.
- [5] In the interest of constant product improvement, we reserve the right to change specifications without notice.
- [6] Recommended charge amplifier: Dytran model 4752B
- [7] Isolation mounting base model 6959 (triaxial) and 6998 (uniaxial) are available.
- [8] This design is patent pending.



Units on the line drawing are in inches, units in brackets are in millimeters. Refer to 127-3316C for more information.



21592 Marilla Street, Chatsworth, California 91311 Phone: 818.700.7818 Fax:818.700.7880 www.dytran.com
For permission to reprint this content, please contact info@dytran.com