

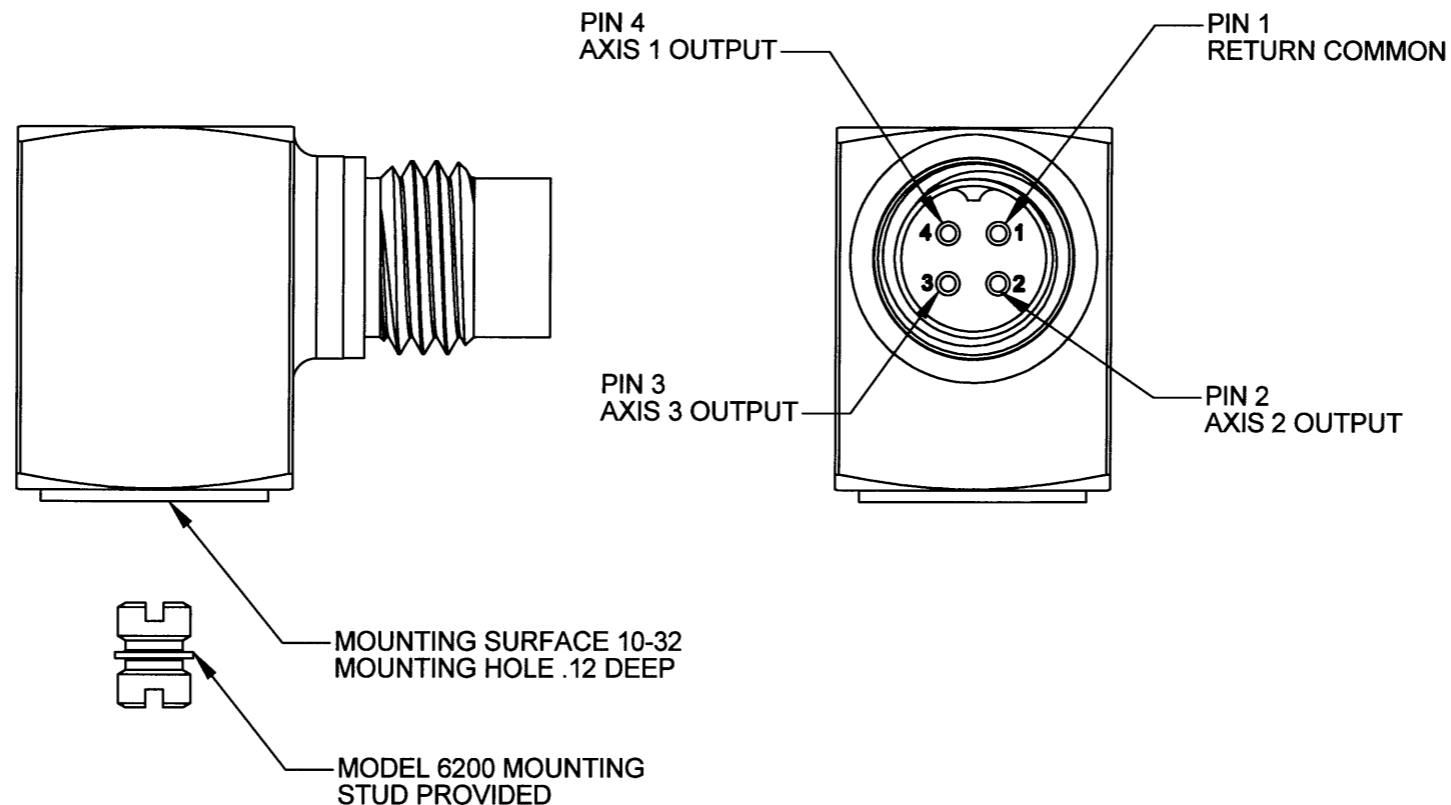
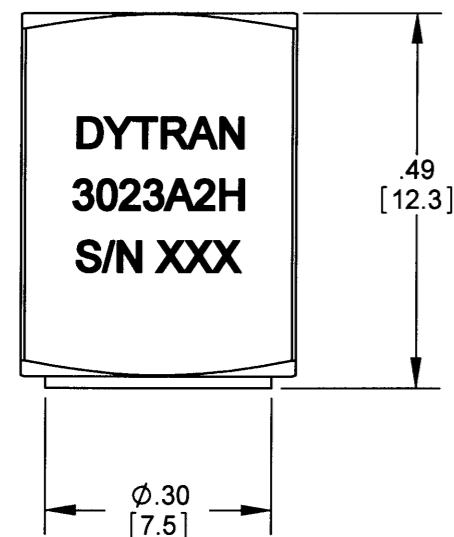
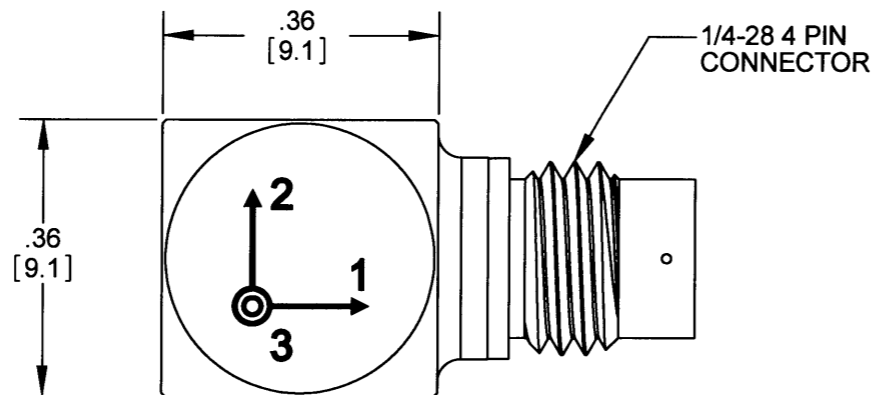
PROPRIETARY AND CONFIDENTIAL

THE INFORMATION CONTAINED IN THIS DRAWING IS THE SOLE PROPERTY OF DYTRAN INSTRUMENTS INC. ANY REPRODUCTION IN PART OR AS A WHOLE WITHOUT THE WRITTEN PERMISSION OF DYTRAN INSTRUMENTS INC. IS PROHIBITED

DWG NO 127-3023A2H SH 1 REV A

REVISIONS

REV.	ECN	DESCRIPTION	BY/DATE	CHK	APPR
A	5402	INITIAL RELEASE	RA, 8/11/08	DV	AWS



- 5. MAX TEMPERATURE: +325F
 - 4. SENSITIVITY: 10mV/g NOMINAL
 - 3. WEIGHT: 4 GRAMS
 - 2. ARROWS INDICATE ACCELERATION DIRECTION FOR POSITIVE OUTPUT
 - 1. MATERIAL: TITANIUM ALLOY
- NOTES: UNLESS OTHERWISE SPECIFIED

DRILL HOLE SIZE	TOLERANCE	UNLESS OTHERWISE SPECIFIED: INTERPRET DIM & TOL PER ASME Y14.5M - 1994. REMOVE BURRS. COUNTERSINK INTERNAL THDS 90° TO MAJOR DIA. CHAM EXT THDS 45° TO MINOR DIA. THD LENGTHS AND DEPTHS ARE FOR MIN FULL THDS. THDS PER MIL-S-7742. DIMENSIONS APPLY AFTER FINISHING ALL MACHINED SURFACES. $\sqrt{63}$ TOTAL RUNOUT WITHIN .005. BREAK SHARP EDGES .005 TO .010. MACHINED FILLET RADII .005 TO .015. WELDING SYMBOLS PER AWS A2.4. ABBREVIATIONS PER MIL-STD-12.
.0135 THRU .125	+ .004 / - .001	
.1260 THRU .250	+ .005 / - .001	
.2510 THRU .500	+ .006 / - .001	
.5010 THRU .750	+ .008 / - .001	
.7510 THRU 1.000	+ .010 / - .001	
1.001 THRU 2.000	+ .012 / - .001	

THIRD ANGLE PROJECTION
USA

UNLESS OTHERWISE SPECIFIED: DIMENSIONS ARE IN INCHES. TOLERANCES ARE: DECIMALS .XX ± .010 .XXX ± .005 ANGLES ± 1°		CONTRACT NO.	
MATERIAL:		APPROVALS	DATE
FINISH:		ORIG PML	4/2/07
DO NOT SCALE DRAWING		CHK DV	8/13/08
		APP AWS	8/14/08

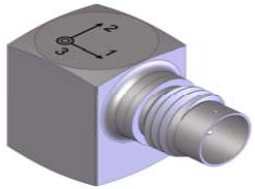
DYTRAN INSTRUMENTS, INC. Chatsworth, CA

MASTER ONLY IF IN RED

TITLE: **OUTLINE/INSTALLATION DRAWING, 3023A2H**

SIZE B	CAGE CODE 2W033	DWG NO 127-3023A2H	REV A
SCALE: 4:1	SOLIDWORKS	SHEET 1 of 1	

MODEL NUMBER 3023A2H	PERFORMANCE SPECIFICATION	DOC NO. PS3023A2H
	ACCELEROMETER, TRIAXIAL, IEPE	REV A, ECN5863, 03/13/09



- **HIGH TEMPERATURE**
- **HERMETICALLY SEALED**
- **MINIATURE SIZE**

PHYSICAL

Weight
Mounting
Connector [1]
Material, Housing / Connector

ENGLISH		SI	
0.14	oz	4.0	grams
10-32 Tapped Hole		10-32 Tapped Hole	
4-pin		4-pin	
Titanium		Titanium	

PERFORMANCE

Sensitivity, -10 + 15% [2]
Range F.S. (each axis)
Frequency Responce, +/-10%
Element Natural Frequency
Equivalent Electrical Noise
Linearity [3]
Transverse Sensitivity Max
Signal Polarity

	ENGLISH	SI
Sensitivity	10 mV/g	1.02 mV/m/s ²
Range F.S. (each axis)	±500 g	4900.00 m/s ²
Frequency Responce, +/-10%	1-Axis 2 to 5000 Hz	2 to 5000 Hz
	2-Axis 2 to 5000 Hz	2 to 5000 Hz
	3-Axis 2 to 10000 Hz	2 to 10000 Hz
Element Natural Frequency	1-Axis 20 kHz	20 kHz
	2-Axis 25 kHz	25 kHz
	3-Axis 30 kHz	30 kHz
Equivalent Electrical Noise	0.007 grms	0.0686 m/s ² rms
Linearity [3]	1 %F.S.	1 %F.S.
Transverse Sensitivity Max	6 %	6 %
Signal Polarity	[5]	[5]

ELECTRICAL

Supply Current Range [4]
Compliance Voltage Range
Output Impedance, Typ.
Output Bias Voltage, Nom
Discharge Time Constant, Nom.
Ground Isolation

ENGLISH	SI
2 to 20 mA	2 to 20 mA
+18 to +30 VDC	+18 to +30 VDC
100 Ω	100 Ω
9 - 11 VDC	9 - 11 VDC
0.2 - 0.4 sec	0.2 - 0.4 sec
Case Ground	Case Ground

ENVIRONMENTAL

Maximun Shock
Maximum Vibration
Temperature Range
Environmental Seal
Coefficient of Thermal Sensitivity

ENGLISH	SI
5000 g pk	49050 m/s ²
±600 g pk	±5880 m/s ²
-60 to +320 °F	-51 to +160 °C
Hermetic	Hermetic
0.015 % / °F	0.015 % / °C

This family also includes:

Model	Sensitivity (mV/g)	Range (Gpeak)	Resolution (Grms)	Oper. Temp(°F)	TC

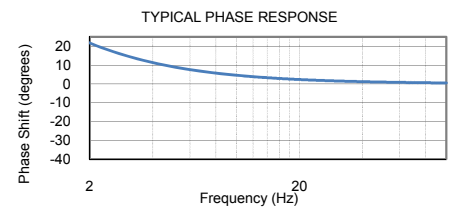
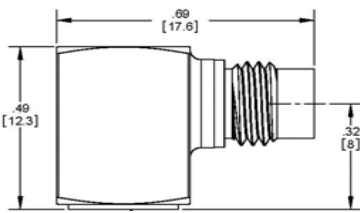
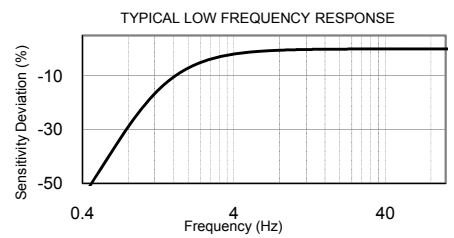
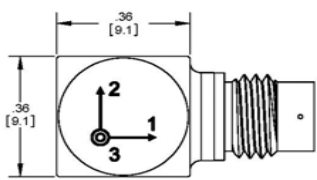
Please, refer to the performance specifications of the products in this family for detailed description

Supplied Accessories:

- 1) Accredited Calibration Certificate (ISO 17025)
- 2) Model 6200 Mounting Stud, Qty 1.

Notes:

- [1] Connector mates with Dytran cable assy. Model 6811AXX. (xx = length in feet)
- [2] Measured At 100 Hz, 1 Grms per ISA RP 37.2
- [3] Measured using zero-based best straight-line method, % of F.S. or any lesser range.
- [4] Power only with Dytran IEPE power unit or other Dytran-compatible constant current type power unit. If power is applied without current limiting protection, the internal amplifier will be destroyed.
- [5] Positive for motion in direction of arrows on housing.



Units on the line drawing are in inches, units in brackets are in millimeters. Refer to 127-3023A2H for more information.



21592 Marilla Street, Chatsworth, California 91311 Phone: 818.700.7818 Fax: 818.700.7880
www.dytran.com For permission to reprint this content, please contact info@dytran.com